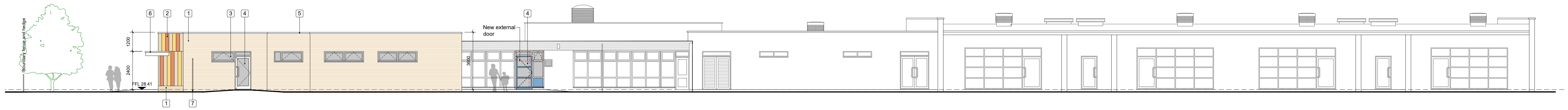


This drawing should not be scaled.  
All dimensions must be checked on site and contractor to report any omissions or errors to the contract administrator

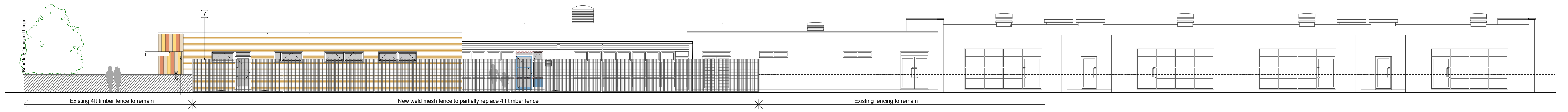
NOTES



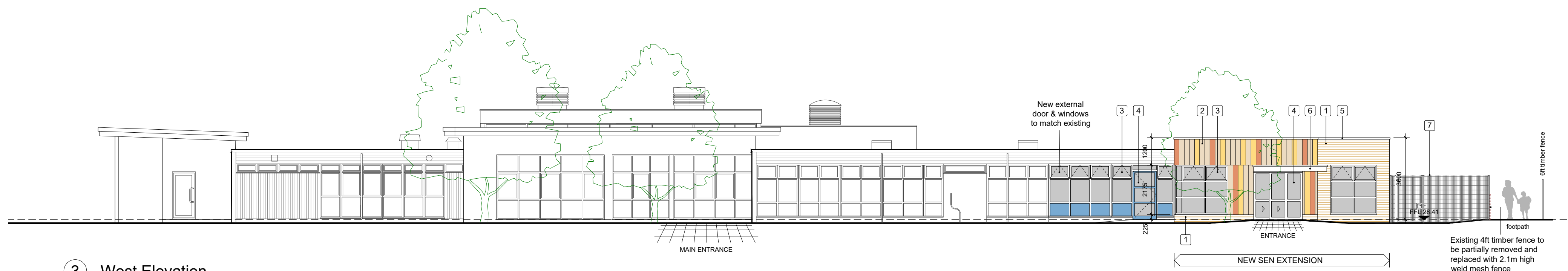
1 North Elevation



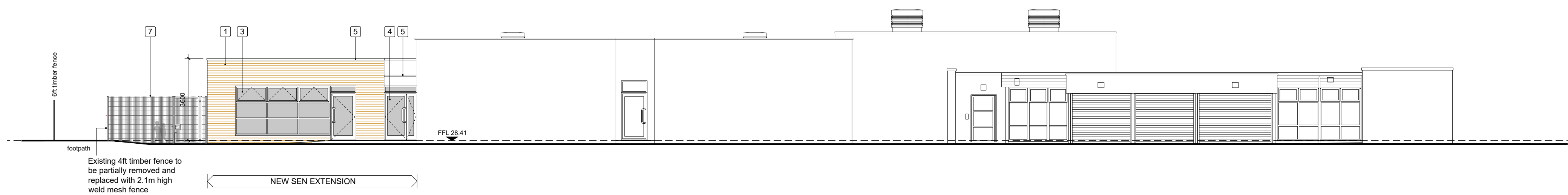
2 South Elevation



2A South Elevation - showing proposed weld mesh fence

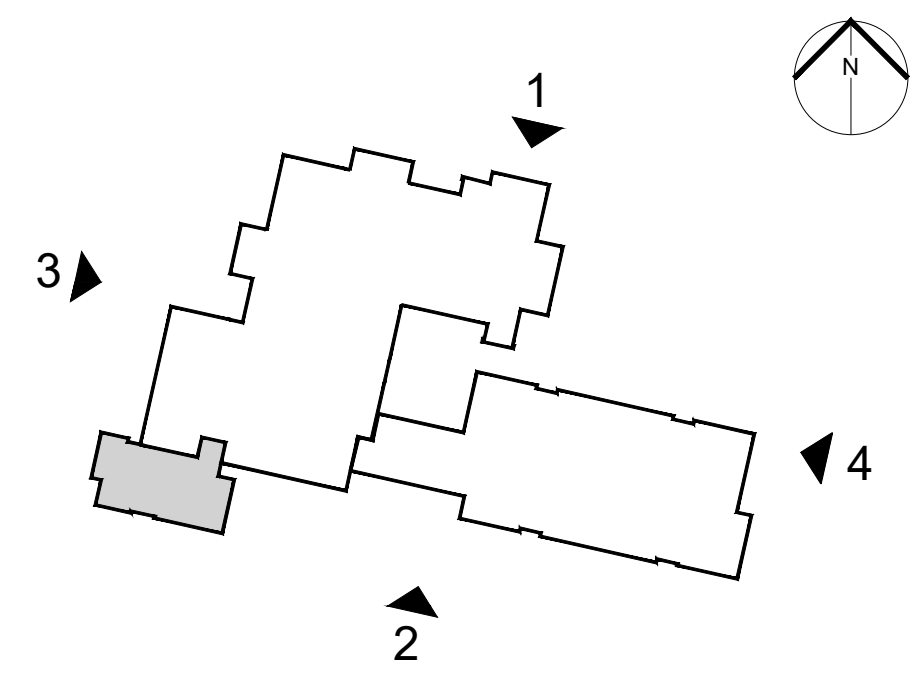


3 West Elevation



4 East Elevation

- KEY:**
- 1 Brickwork, to match existing
  - 2 Vertical panel cladding, exact colours TBC
  - 3 Aluminium double glazed windows, colour to match existing
  - 4 Aluminium double glazed doors, colour to match existing
  - 5 Aluminium fascias, parapets, gutters and rainwater downpipes, polyester powder coated, colour dark grey
  - 6 Entrance canopy, aluminum polyester powder coated, colour TBC
  - 7 New 2.1m high weld mesh fencing, colour dark green



Key Plan



Rev	Description	Dm	Chk	Date

**Stockton-on-Tees**  
BOROUGH COUNCIL

Big plans, bright future

Economic Growth & Development Services  
Director of Economic Growth & Development  
Richard McGuckin B.Eng., C.Eng., F.I.C.E.  
P.O. Box 229, Kingway House, Billingham, TS23 2YL  
Tel: 01842 393939, email: egds@stockton.gov.uk

Project  
Junction Farm Primary School  
Butterfield Drive, Eaglescliffe  
New SEN Provision

Content  
Proposed Elevations

Date	May 2018	Dwg No.	A10918 - 106
Drawn	LN	Checked	MS
		Scales @ A1	1:125
		Rev	-